

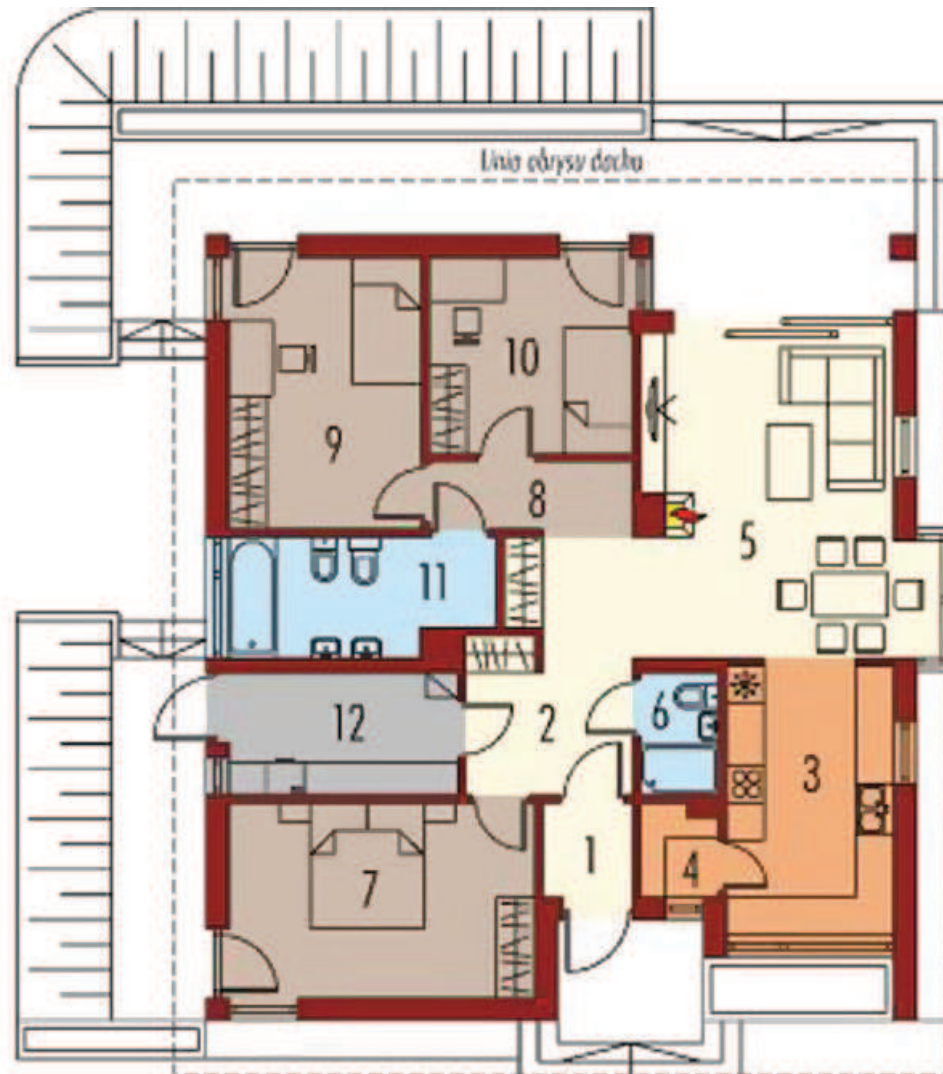


Rafael II

Elewacje:



Rzuty:



| | |
|----------------------|---------------------|
| 1. Wiatrołap | 2.09m ² |
| 2. Hol | 10.64m ² |
| 3. Kuchnia | 11.39m ² |
| 4. Spizarnia | 1.68m ² |
| 5. Salon | 20.87m ² |
| 6. Toaleta | 2.33m ² |
| 7. Sypialnia | 14.88m ² |
| 8. Korytarz | 3.67m ² |
| 9. Sypialnia | 13.04m ² |
| 10. Sypialnia | 9.88m ² |
| 11. Łazienka | 7.45m ² |
| 12. Pom. gospodarcze | 6.93m ² |